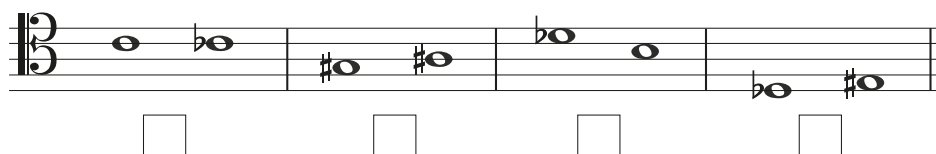
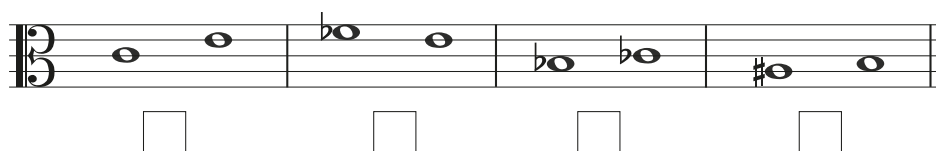
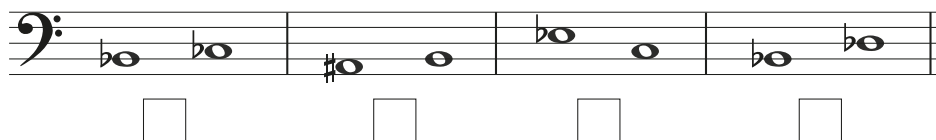
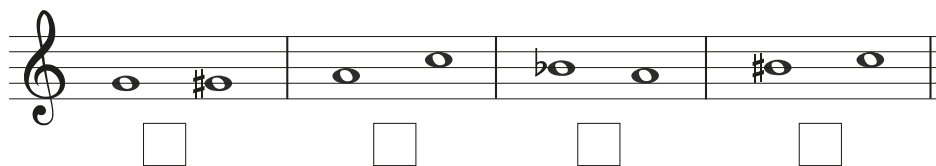
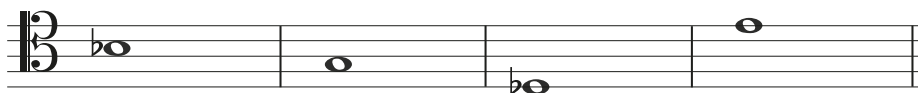
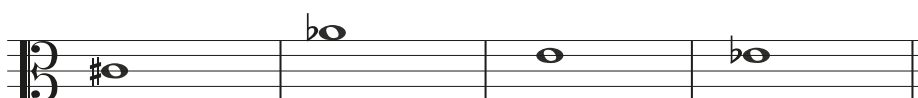
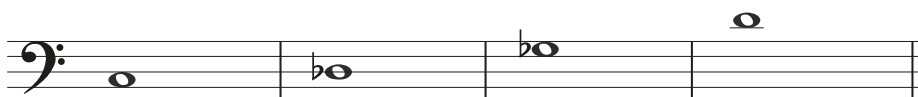
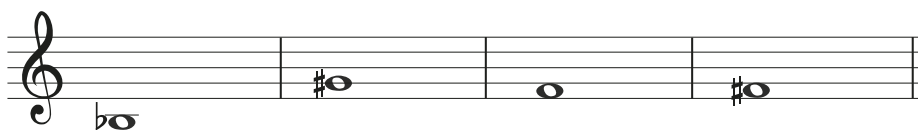


2. Transposing up a Major 2nd

1. Tick the intervals of a 2nd.



2. Write a note a Major 2nd above each semibreve.



3. What is a Major 2nd above the following keys?

D Major →

E \flat Major →

F Major →

E Major →

G Major →

G \flat Major →

A Major →

A \flat Major →

4. Transpose each key signature up a major 2nd.

↓			

↓			

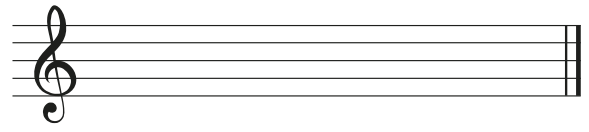
↓			

↓			

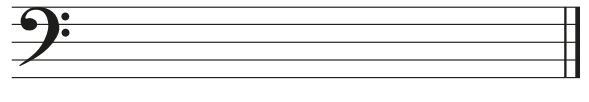
5. Transpose each melody up a major 2nd.



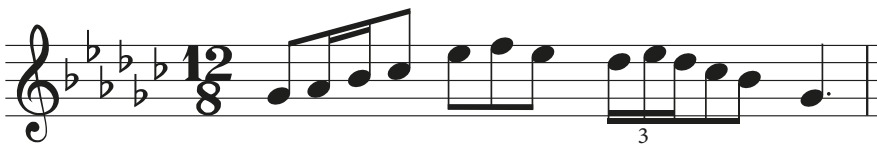
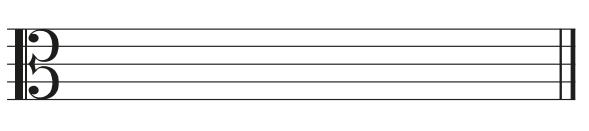
Bb Major



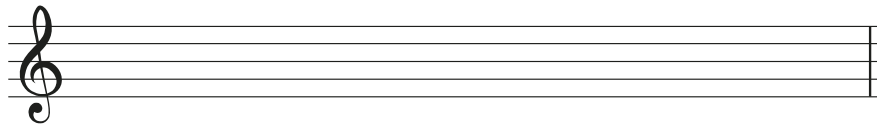
D Major



E Major



Gb Major



6. Put a tick or cross in each box to show if each interval is a major 2nd.

Interval 1: C4 to D#4 (Treble clef, key of D major) ☐

Interval 2: E4 to F4 (Treble clef, key of Bb major) ☐

Interval 3: G4 to Ab4 (Treble clef, key of F major) ☐

Interval 4: A4 to B4 (Treble clef, key of C major) ☐

Interval 5: C3 to D3 (Bass clef, key of D major) ☐

Interval 6: E3 to F3 (Bass clef, key of Bb major) ☐

Interval 7: G3 to Ab3 (Bass clef, key of F major) ☐

Interval 8: A3 to B3 (Bass clef, key of C major) ☐

Interval 9: C4 to D4 (Alto clef, key of D major) ☐

Interval 10: E4 to F4 (Alto clef, key of Bb major) ☐

Interval 11: G4 to Ab4 (Alto clef, key of F major) ☐

Interval 12: A4 to B4 (Alto clef, key of C major) ☐

Interval 13: C4 to D4 (Soprano clef, key of D major) ☐

Interval 14: E4 to F4 (Soprano clef, key of Bb major) ☐

Interval 15: G4 to Ab4 (Soprano clef, key of F major) ☐

Interval 16: A4 to B4 (Soprano clef, key of C major) ☐